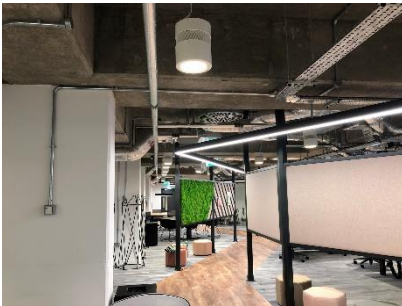




PROJECT PROFILE – RBS ISLINGTON

Royal Bank of Scotland is a major retail and commercial bank in the UK. It is one of the retail banking subsidiaries of NatWest Group, together with NatWest (in England and Wales) and Ulster Bank.

DL M&E Building Services were engaged by RBS to undertake the mechanical and electrical refurbishment works to the lower ground office area, basement area and several toilet blocks throughout the office.

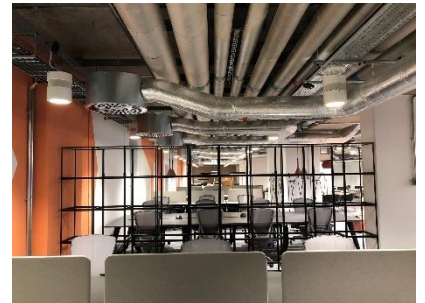


The open ceiling throughout the office space showcases the M&E services, giving the modern industrial feel to the space. LED linear luminaires highlight the areas of travel throughout the space, with LED downlights providing the functional lighting for the desks. Meeting rooms were provided with LED pendant lights.

New DX air-conditioning services were installed along with ventilation systems, which delivered conditioned air to the space by aesthetically modern swirl diffusers. Domestic services to the newly formed tea points were also installed.

All electrical services were contained within galvanised trunking and conduit to the exacting standards of the design and specification, complementing the overall look and feel to the office.

In addition to the refurbishment of the large office space, DL M&E Building Services undertook the works to the existing toilets across all levels of the building. The toilets were fitted with modern Corian sinks, new toilets and hand-dryers, to a programme of works that enabled the occupants of the building to continue to use the facilities.



DL CLIENT: **ROYAL BANK OF SCOTLAND**

DL VALUE: **£900K**

DL CONTRACT LENGTH: **ROYAL BANK OF SCOTLAND**

DL SERVICES: **MECHANICAL AND ELECTRICAL INSTALLATION**

DL SECTOR: **CORPORATE BANKING**